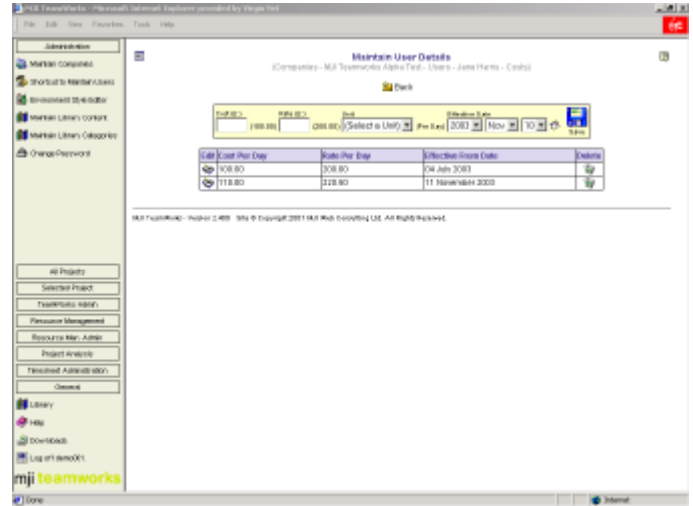


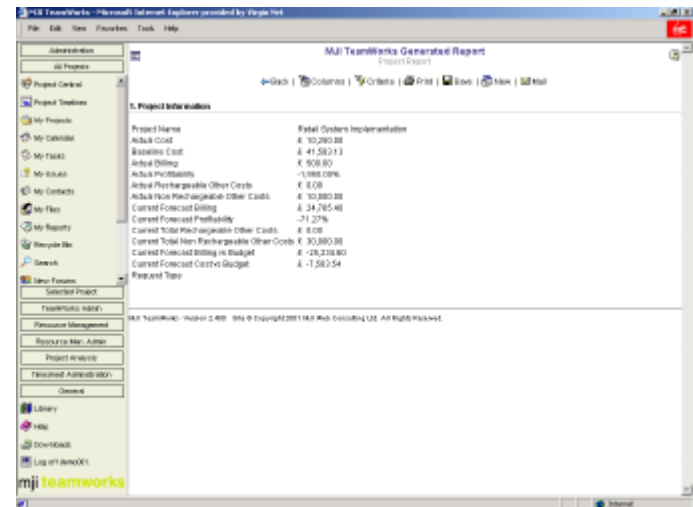
Introduction to the cost and rate management module

The cost and rate management module of MJI TeamWorks enables organisations to accurately track the actual cost to date and forecast cost at completion for their projects. Both labour costs and non labour costs can be managed.

- Create multiple resources costs and rates across projects and time
- Actual cost to date and forecast cost at completion automatically calculated at task and project level
- Project costs always up-to-date based on actual time and time to complete entered by resources
- Definable cost codes
- Manage task billing on a time or fixed price basis
- Manage labour and non labour costs
- Manage the recharge of non labour costs to clients



:: record multiple cost and rate structures



:: report over project costs and rates

Contact details

MJI Consulting, Carrington Business Park, Carrington, Manchester, M31 4DD, UK

Switchboard: +44 (0) 161 776 4055 **Sales:** +44 (0) 161 776 4058 **Fax:** +44 (0) 161 776 4056

Email: info@mjiteamworks.com **Web:** www.mjiteamworks.com