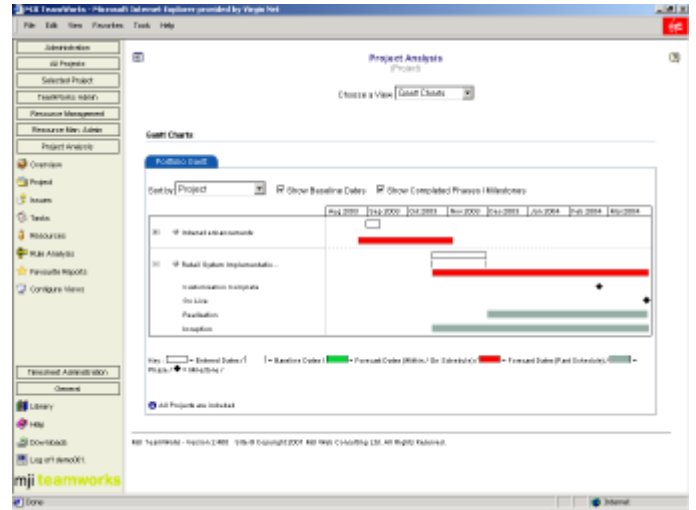


Introduction to the project analysis module

The project analysis module within MJI TeamWorks provides project managers, resource managers, executives and stakeholders with concise, summarised information regarding projects.

The module is user configurable - allowing people to tailor information delivery to their individual requirements. Cost variances, schedule variances, resource issues, delays and project issues can be reviewed using summary views.

- Manage and review a portfolio of projects graphically
- High level summary view for project managers, resource managers, financial controllers and executives
- Individuals can tailor their personal view of the project analysis area
- Rules based notification of variances from budget, days or dates by exception



:: portfolio view

Due	Project	Description	Due Date	Status
	Internet enhancement	Functional design	08 Oct 2003	Started
	Internet enhancement	Developing pages	27 Oct 2003	Not Started
	Internet enhancement	Developing test scenarios	18 Oct 2003	Not Started
	Internet enhancement	Testing	03 Nov 2003	Not Started
	Internet enhancement	Implementation	03 Nov 2003	Not Started
	Internet enhancement	Printer design proposal and orders	13 Oct 2003	Not Started
	Internet enhancement	Design i layout	18 Oct 2003	Not Started
	Internet enhancement	Staff resources hire	08 Nov 2003	Not Started
	Retail System Implementation	Implementable time spreadsheet L	22 Oct 2003	Not Started
	Retail System Implementation	Request for proposals	22 Oct 2003	Started

:: review tasks and issue by criteria including phase, status and due period

project analysis

Contact details

MJI Consulting, Carrington Business Park, Carrington, Manchester, M31 4DD, UK

Switchboard: +44 (0) 161 776 4055 **Sales:** +44 (0) 161 776 4058 **Fax:** +44 (0) 161 776 4056

Email: info@mjiteamworks.com **Web:** www.mjiteamworks.com