

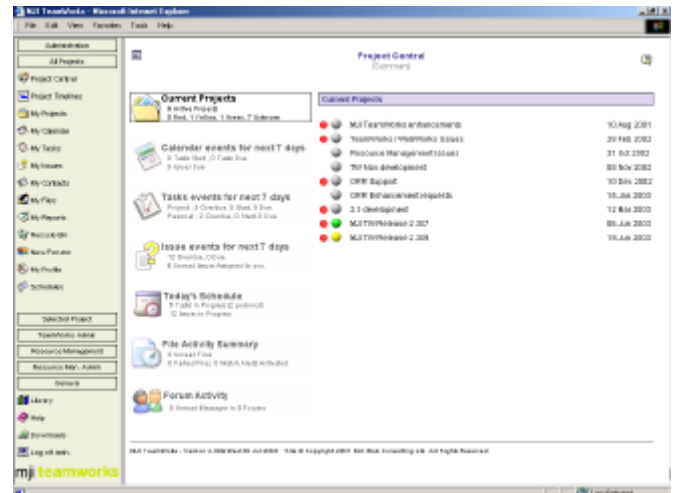
Introduction to the project management module

The project management module of MJI TeamWorks enables organisations to manage projects and resources effectively. MJI TeamWorks provides tools enabling progress to be reviewed against agreed plans, work assignments to be communicated and for resources to provide feedback on current progress. Resource schedules are always aligned with priorities.

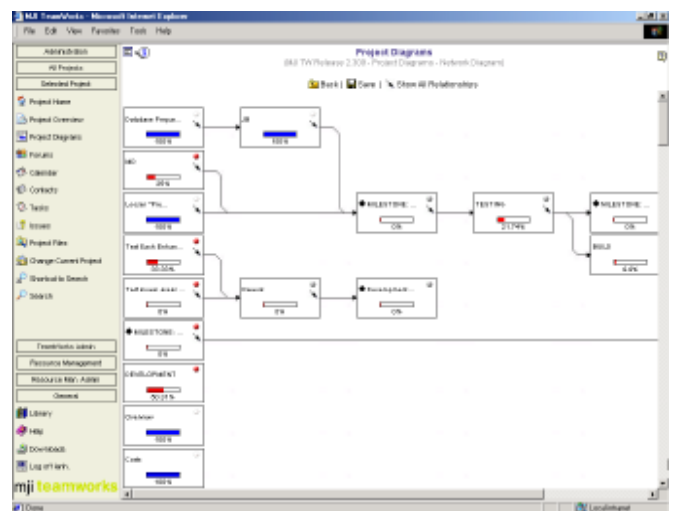
Organisations can manage schedules and review progress across a portfolio of projects. MJI TeamWorks always provides an up-to-date status for projects and tasks - therefore delays and problems can be quickly identified and action taken.

External resources, clients or customers can be granted access to MJI TeamWorks - therefore providing them with visibility of progress, allowing them involvement in the project and enabling the monitoring of any work allocated to them.

- Gantt chart and network diagram views
- Configurable traffic lights and due indicators
- Portfolio and cross-project management
- Synchronisation with Microsoft Project
- Automatic or manual rescheduling of tasks
- Templates support standard process definition
- Open, overdue and forthcoming task sheets
- Real time status of projects provided
- Rolled up status view, single project view and cross project view of tasks
- Wizard based cross-project reporting
- Supports milestones, dependencies, parent tasks, phases and work breakdown codes
- Link tasks to documents and external resources
- Time recording and task completion tracking
- Task routing to team members upon completion of predecessor tasks
- Personal tasks (public and private)
- Personalised views show people's individual work schedules



:: personalised to do lists



:: multiple views of projects available

Contact details

MJI Consulting, Carrington Business Park, Carrington, Manchester, M31 4DD, UK

Switchboard: +44 (0) 161 776 4055 **Sales:** +44 (0) 161 776 4058 **Fax:** +44 (0) 161 776 4056

Email: info@mjiteamworks.com **Web:** www.mjiteamworks.com